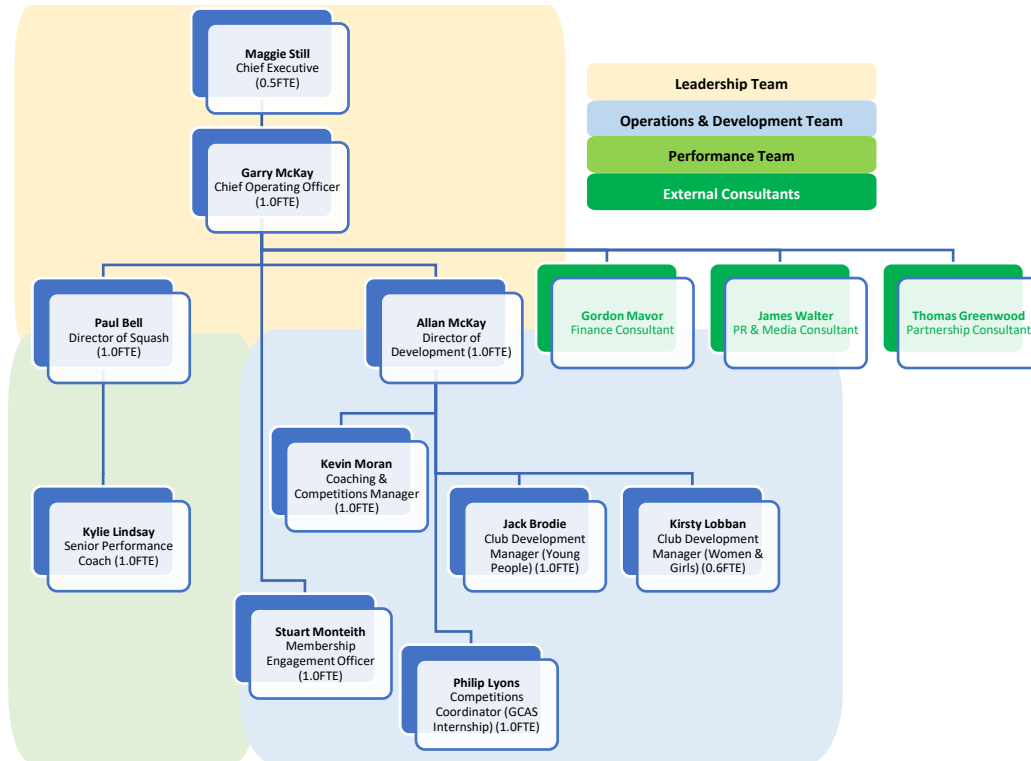


Scottish Squash Executive Team - Organisational Chart





Scottish Squash Executive Team – Roles & Responsibilities

| Leadership Team | | | | |
|--|-----------------------------------|---|----------------------------------|--|
| | Operations Team | | | |
| Chief Executive (0.5FTE) | Chief Operating Officer (1.0FTE) | Director of Squash (1.0FTE) | Director of Development (1.0FTE) | Membership Engagement Officer (1.0FTE) |
| <u>Maggie Still</u> | <u>Garry McKay</u> | <u>Paul Bell</u> | <u>Allan McKay</u> | <u>Stuart Monteith</u> |
| Executive Team | Operations Team Line Management | Performance Team Line Management | Development Team Line Management | Membership Services |
| Governance, Board & Stakeholder Management | Planning & Reporting (Governance) | Planning & Reporting (Players) | Planning & Reporting (Clubs) | SportyHQ Membership Modules |
| Strategy | Governance | Partnership Management (sportscotland , SiS, CGS) | Participation & Membership | Member Communications |
| Sponsorship | Compliance | Performance Pathway, Programme & Athletes | Diversity & Inclusion | Pathway Services |
| sportscotland Liaison | Risk Management | Representative Teams | Facilities Strategy | ICT |
| Public Relations | Finance & HR | | Volunteer Management | |
| | Partnerships | | Major Events | |
| | Marketing & Communication | | | |
| | Child Protection | | | |



TOGETHER FOR SQUASH IN SCOTLAND



Scottish Squash Executive Team – Roles & Responsibilities

| <i>Development Team</i> | | | | |
|--|---|---|--|---|
| Director of Development (1.0FTE) | Coaching & Competitions Manager (1.0FTE) | Club Development Manager (Young People) (1.0FTE) | Club Development Manager (Women & Girls) (0.6FTE) | Competitions Coordinator (GCAS Internship) (1.0FTE) |
| <u>Allan McKay</u> | <u>Kevin Moran</u> | <u>Jack Brodie</u> | <u>Kirsty Lobban</u> | <u>Philip Lyons</u> |
| Planning & Reporting (Clubs) | Planning & Reporting (Coaching) | Club Development | Club Development | Major Events Support |
| Participation & Membership | Coach Education | Development Pathway, Programmes & Initiatives | Development Pathway, Programmes & Initiatives | Competition Pathway Support |
| Diversity & Inclusion | Tutor Development | Workforce Development | Workforce Development | Platinum Events Partnership Management Support |
| Facilities Strategy | Coach Development | Diversity & Inclusion | Diversity & Inclusion | |
| Volunteer Management | Referee Development | schoolsquash | G/RLS DO SQUASH | |
| Major Events | | Going for Gold | H//T SQUASH | |
| | Planning & Reporting (Competitions) | | | |
| | Competition Pathway | | | |
| | Platinum Events Partnership Management | | | |

| <i>Performance Team</i> | |
|---|--|
| Director of Squash (1.0FTE) | Senior Performance Coach (1.0FTE) |
| <u>Paul Bell</u> | <u>Kylie Lindsay</u> |
| Performance Team Line Management | National Coaching Plan |
| Planning & Reporting (Players) | Performance Programme Delivery |
| Partnership Management (sportscotland , SIS, CGS) | Group & Individual Athlete Coaching |
| Performance Pathway, Programme & Athletes | Junior Representative Teams |
| Representative Teams | Junior Performance Pathway, Programme & Athletes |



TOGETHER FOR SQUASH IN SCOTLAND